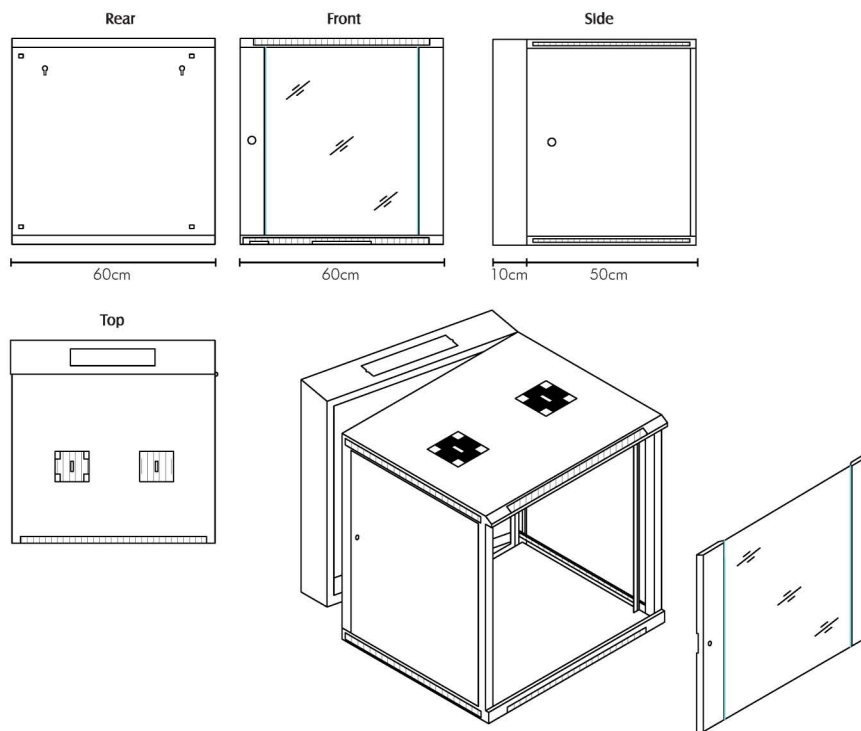


DUAL SECTION 600 mm DEEP



- **Construction:** Manufactured from 1.2mm carbon sheet steel plate with gland plates at the top and bottom for cable entry. Two pairs of fully adjustable 1.5mm 19" profiles with universal punching, and wall mounting holes at the rear for easy mounting.
- **Rear Section:** 100 mm Deep hinged on right side.
- **Front Section:** 500 mm Deep hinged on right side.
- **Front Door:** Made from 3mm tempered glass reinforced with end metal panels with right and left side hinge options. Supplied with cylinder lock and keys.
- **Ventilation:** Two fan grill cutouts provided on top panel to accommodate 120 x 120mm fans. Ventilation slots top, bottom and sides of cabinet.
- **Rating:** IP 20.
- **Finish:** Painted with high quality polyester baked oven dried protective paint.
- **Cable Entry:** Top and bottom gland plates
- **Packing:** Supplied assembled only

TECHNICAL SPECIFICATIONS



ORDERING INFORMATION

Effective Height in U	Width. mm.	Overall Depth. mm	Overall Height. mm	Order Code
9U	600	600	380	DC-RK-09WD-4
12U	600	600	645	DC-RK-12WD-4
15U	600	600	780	DC-RK-15WD-4
21U	600	600	1040	DC-RK-21WD-4

*Other Sizes & Depths on request